



ZHENGZHOU ORIENT POWER CO., LTD

1626, No.9, Sanquan Road, Zhengzhou, Henan, 450000 P.R.China

Tel/Fax:+86 37186097078, sales direct: +86 13673997131

orient@powerinsulator.com http://www.powerinsulator.com

COMPOSITE INSULATOR

Polymer Post Insulator

The composite station post insulators mainly apply to transformer substation and switches and other apparatus. The voltage can be upto 220KV and now most of the small apparatus has

chosen polymer post insulator to instead of porcelain ones since

they have more advantages. The type code is normally

FZS and FZSW Type.



Indoor and Outdoor post Composite Insulator Main Dimensions and Properties

Type	Voltage rating	System Normal Voltage KV	Rated Mechanical Load		Height mm	Insulating Distance	Minimum nominal Cree-page distance mm	1min Power frequency withstand voltage kv (virtual Value) \geq		Lightning impulse and Voltage kv (peak Value) \geq	Top end fitting installing dimension		Bottom end fitting Installing dimension	
			Bending KN	Torsion KN m				dry	wet		Pitch circle Dia. a ₁	Dia. hole d ₂	Length of Symmetry hole center a ₁	Dia. hole d ₂
FZSN-12/4	12	10	4	-	226	110	200	42	30	75	-	M16	-	M16
FZSW4-12/4	12	10	4	0.6	220	130	400	42	30	75	44	M12	140	14
FZSW4-12/4	12	10	2	0.6	220	130	400	42	30	75	140	14	140	14
FZS-24/8-1	24	20	8	1.2	350	250	400	68	50	125	76	M12	180	14
FZS-24/8-2	24	20	8	1.2	350	240	450	68	50	125	140	M12	180	14
FZSW2-40.5/4-1	40.5	35	4	1.0	475	300	900	100	80	185	140	14	140	14
FZSW2-40.5/4-2	40.5	35	4	1.0	475	300	900	100	80	185	140	M12	140	M12
FZSW3-40.5/6-1	40.5	35	6	1.5	475	320	950	100	80	185	140	14	140	14
FZSW3-40.5/6-2	40.5	35	6	1.5	475	320	950	100	80	185	140	M12	140	M12
FZSW4-40.5/8G-1	40.5	35	8	2.0	550	420	1650	100	80	185	140	M12	140	M12
FZSW4-40.5/8G-2	40.5	35	8	2.0	550	420	1650	100	140	185	140	14	140	14

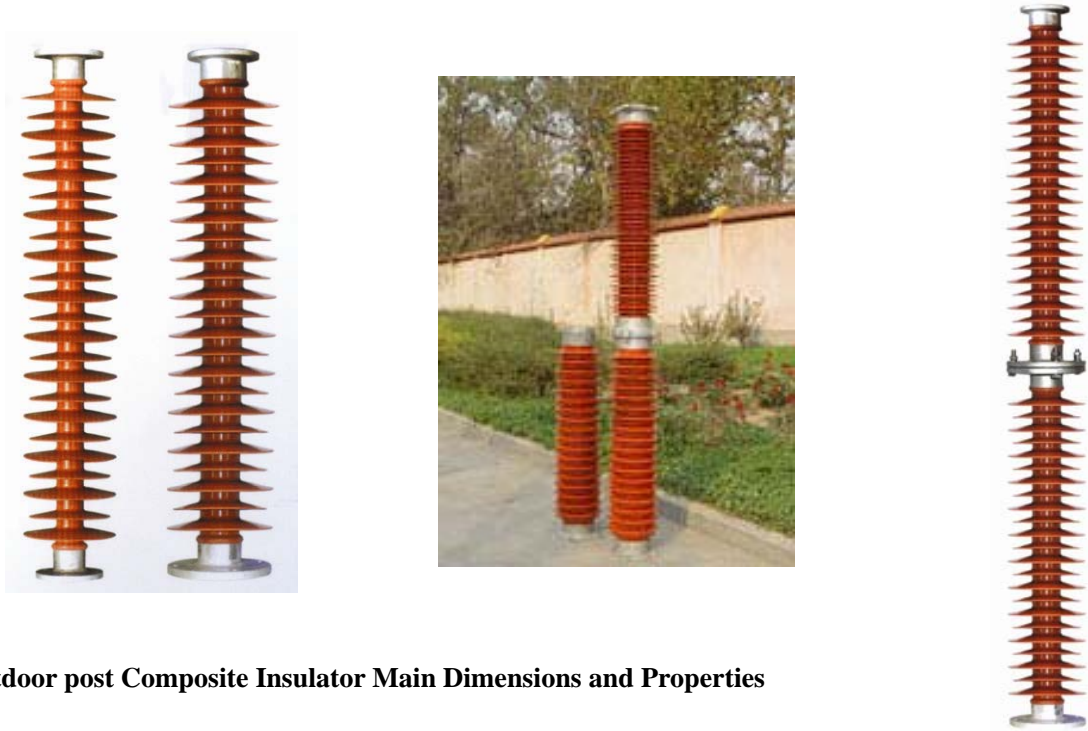


ZHENGZHOU ORIENT POWER CO., LTD

1626, No.9, Sanquan Road, Zhengzhou, Henan, 450000 P.R.China

Tel/Fax:+86 37186097078, sales direct: +86 13673997131

orient@powerinsulator.com http://www.powerinsulator.com



Indoor and Outdoor post Composite Insulator Main Dimensions and Properties

Type	Voltage rating	System Normal Voltage KV	Rated Mechanical Load		Height mm	Insulating Distance	Minimum nominal Creepage distance mm	1min Power frequency withstand voltage kv (virtual Value) \geq		Lightning impulse and Voltage kv (peak Value) \geq	Top end fitting installing dimension		Bottom end fitting Installing dimension	
			Bending KN	Torsion KN m				dry	wet		Pitch circle Dia. a_1	Dia. hole d_2	Length of Symmetry hole center a_1	Dia. hole d_2
FZSW4-72.5/4	72.5	66	4	2.0	730	600	2350	165	140	325	140	M12	140	M12
FZSW4-72.5/6G	72.5	66	6	2.5	730	600	2350	165	140	325	140	M12	140	M12
FZSW4-72.5/8G	72.5	66	8	2.5	730	600	2350	165	185	325	140	M16	140	M16
FZSW4-126/4-1	126	110	4	2.0	1180	1050	4150	265	185	450	140	M16	140	M16
FZSW4-126/4-2	126	110	4	2.0	1180	1050	4150	265	185	450	225	18	140	14
FZSW4-126/8-1	126	110	8	3.0	1180	1050	4150	265	185	450	140	M16	225	18
FZSW4-126/8-2	126	110	8	3.0	1180	1000	4150	265	185	450	225	M18	225	18
FZSW4-252/4	252	220	4	3.0	2360	2100	8300	495	395	1000	140	M16	225	18
FZSW4-252/8	252	220	8	4.0	2360	2100	8300	495	395	1000	225	18	225	18
FZSW4-252/12.5	252	220	12.5	4.0	2360	2100	8300	495	395	1000	225	18	225	18