

COMPOSITE INSULATOR



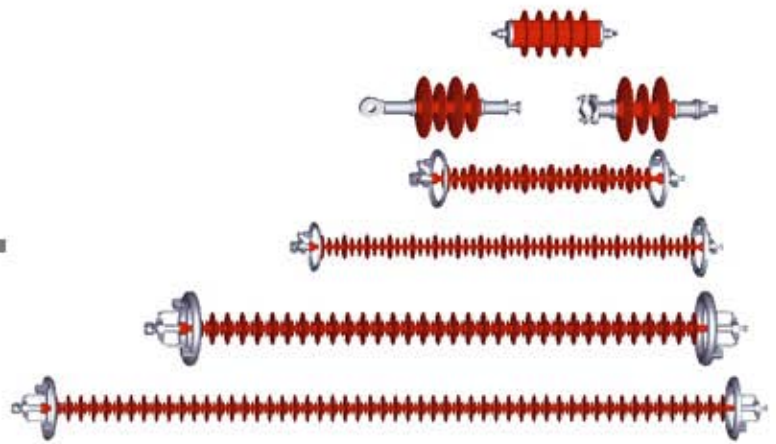
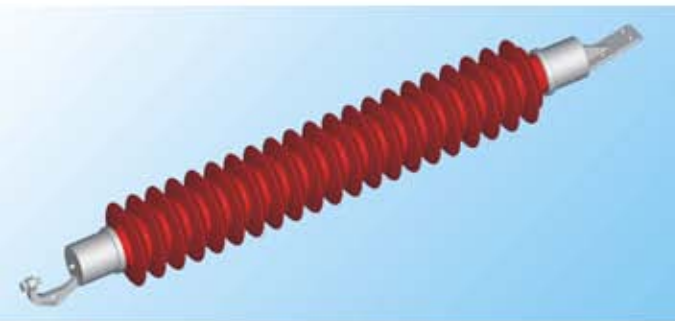
CHARACTERISTICS:

- whole moulding and whole injection
- crimped end fittings
- artistic looking; small volume
- light weight; uneasy broken
- high bending and torsion strength
- good anti-explosive performance
- easy transportation and installation



PRODUCT INTRODUCTION

COMPOSITE INSULATOR



PRODUCT TYPE

- long rod suspension insulator
- pin type composite insulator
- composite crossarm insulator
- composite post insulator
- composite bushing
- composite insulators for electric railways

