



# ZHENGZHOU ORIENT POWER CO., LTD

1626, No.9, Sanquan Road, Zhengzhou, Henan, 450000 P.R.China

Tel/Fax:+86 37186097078, sales direct: +86 13673997131

orient@powerinsulator.com http://www.powerinsulator.com

## PORCELAIN INSULATOR

### Shackle Insulator

Shackle insulator: A shackle insulator is an insulator of generally cylindrical form. It has two or more sheds and an axial mounting hole. Through the thread nails, it can be fixed firmly.

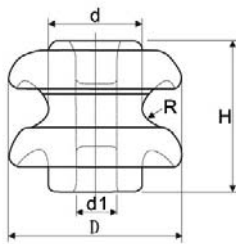


Fig 1

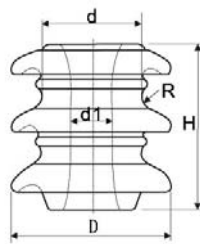


Fig 2

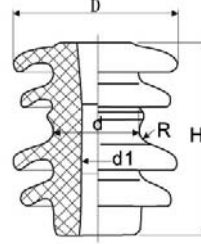


Fig 3

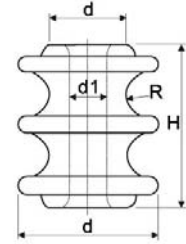


Fig 4

Type	Fig No.	Main dimensions (mm)					Mechanical failing load (kN)	Power frequency flashover voltage (KV)	
		H	D	d	d1	R		Dry	Wet
ED-2B	1	76	89	48	17.5	10	13	25	12
ED-2B1	1	76	92	55	18.5	9	13	25	12
ED-2B2	1	76	90	50	19	9.5	13	25	12
ED-2B3	1	76	89	50	21	9.5	13	25	12
ED-2B4	1	76	89	48	21	10	13	25	12
ED-2C	2	80	80	50	22	6	13.5	25	12
E-1	3	180	150	70	26	13	20	45	27
E-2	3	150	130	70	26	12	20	38	23
R-6	4	80	70	40	18	7	8.9	12	15



# ZHENGZHOU ORIENT POWER CO., LTD

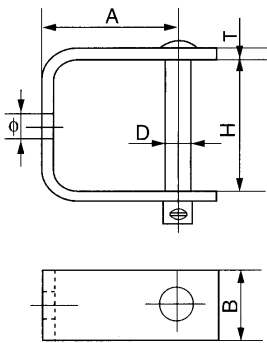
1626, No.9, Sanquan Road, Zhengzhou, Henan, 450000 P.R.China

Tel/Fax:+86 37186097078, sales direct: +86 13673997131

orient@powerinsulator.com <http://www.powerinsulator.com>

## D-Bracket

The D-brackets are used to fix on shackle and spool insulators at the low voltage line.



Catalog No.	Dimensions (mm)						U.T.S KN	Weight (Kg)
	A	B	D	H	T	Φ		
DB-01	58	40	8	44	4	10	8	0.30
DB-02	68	40	10	50	6	14	11	0.50
DB-31	64	30	10	58	5	14.0	11	0.30
DB-32	89	40	16	70	6	17.5	18	0.80
DB-33	115	40	16	79	6	17.5	18	0.90
DB-34	95	45	20	92	8	21.5	22	1.40
DB-35	108	45	20	105	8	21.5	20	1.60
DB-36	144	45	20	121	8	21.5	20	1.90

