



# ZHENGZHOU ORIENT POWER CO., LTD

1626, No.9, Sanquan Road, Zhengzhou, Henan, 450000 P.R.China

Tel/Fax:+86 37186097078, sales direct: +86 13673997131

orient@powerinsulator.com http://www.powerinsulator.com

## PORCELAIN INSULATORS

### Disc Suspension Insulator

Disc suspension insulator is an assembly of one or more shells with metallic fittings. They are nonrigid supporting type. It can be divided into ball & socket type and clevis & tongue type. This structure enables them form the insulator string by fitting into themselves one another as per voltage requirement. A suspension insulator set complete with the fittings is used to carry a line conductor or conductors at its lower end. The top is fixed to the crossarm of the tower.



Ball and socket type



clevis and tongue type



anti-pollution type

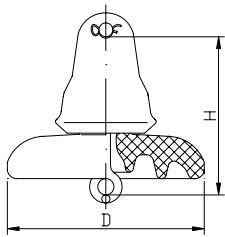


fig 1

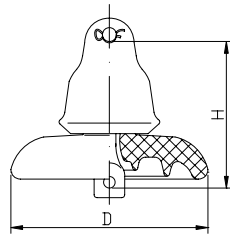


fig 2

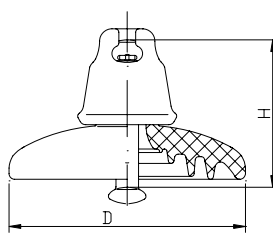


fig 3

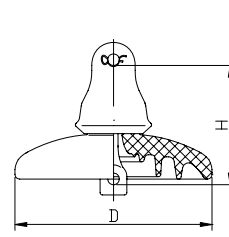


fig 4

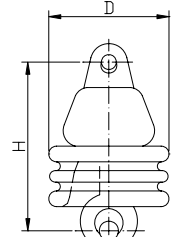


fig 5

ANSI Type			52-1	52-2	52-3	52-4	52-5	52-6	52-8	52-9A	
Fig No.			1	2	3	4	3	4	3	5	
Main dimension (mm)		D	165	190.5	254	254	254	254	280	114	
		H	140	146	146	146	146	146	146	146	159
Leakage distance-mm			178	210	292	292	292	292	280	171	
Power frequency puncture voltage-KV			80	90	110	110	110	110	110	80	
Flashover voltage -KV	Power freq.	Dry	60	65	80	80	80	80	80	60	
		Wet	30	35	50	50	50	50	50	30	
	Critical impulse 1.5x40us wave	Pos.	100	115	125	125	125	125	125	125	110
		Neg.	100	115	130	130	130	130	130	130	90
Radio influence voltage	Test voltage to ground-KV		7.5	7.5	10	10	10	10	10	7.5	
	Max. RIV at 1000kHz-μv		50	50	50	50	50	50	50	50	50
Rated E&M failing load-KN			44	70	70	70	111	111	160	44	
Tension proof load-KN			22	35	35	35	55.5	55.5	80	22	
Impact strength-N.m			5	5.5	6	6	7	7	10	5	



# ZHENGZHOU ORIENT POWER CO., LTD

1626, No.9, Sanquan Road, Zhengzhou, Henan, 450000 P.R.China

Tel/Fax:+86 37186097078, sales direct: +86 13673997131

orient@powerinsulator.com http://www.powerinsulator.com

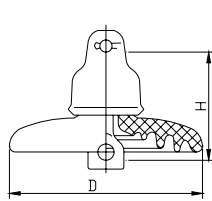


fig 1

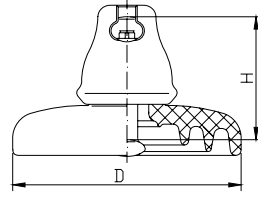


fig 2

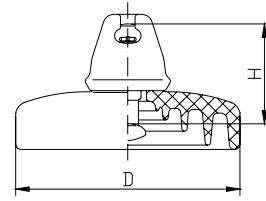
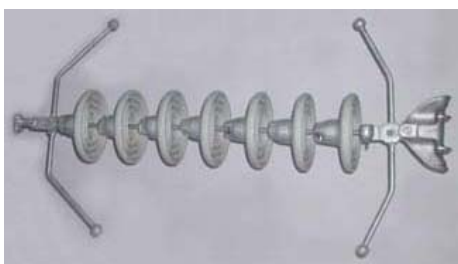


fig 3

IEC Type	Fig No	Unit spacing H (mm)	Dia. D (mm)	Leakage distance (mm)	Rated E&M failing load (KN)	Routine tension load	Impact failing load (N.m)	Wet power freq. withstand voltage (KV)	Lighting impulse withstand voltage (KV)	RIV		Power freq. Puncture voltage (KV)
										Test voltage to ground (KV)	Max RIV at 1MHz (μv)	
U70BS	2	127	255	295	70	35	6	40	100	10	50	110
U70BL	2	146	255	295	70	35	6	40	100	10	50	110
U70C	1	146	255	295	70	35	6	40	100	10	50	110
U100BL	2	146	255	295	100	50	7	40	100	10	50	110
U120B	2	146	255	295	120	60	7	40	100	10	50	110
U160BS	2	146	280	320	160	80	10	40	100	10	50	110
U210B	2	170	300	370	210	105	10	42	110	10	50	120
U300B	2	195	320	370	300	150	10	45	110	10	50	120
U530B	2	240	380	600	530	265	10	55	140	10	50	140
XHP-70	3	146	255	432	70	35	5.6	42	120	10	50	120
XHP-120	3	146	255	432	120	60	7	42	120	10	50	120

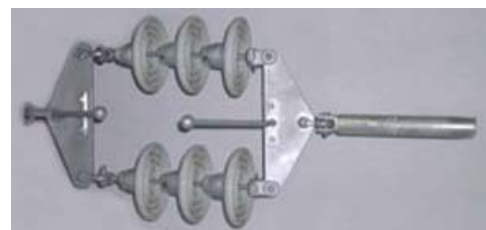


Suspension string

Application: The structure of disc suspension insulators enables them form the insulator string by fitting into themselves one another as per voltage requirement. A suspension insulator set complete with the fittings is used to carry a line conductor or conductors at its lower end. The top is fixed to the crossarm of the tower.



Single tension string



Double tension string