



## ZHENGZHOU ORIENT POWER CO., LTD

1626, No.9, Sanquan Road, Zhengzhou, Henan, 450000 P.R.China

Tel/Fax:+86 37186097078, sales direct: +86 13673997131

orient@powerinsulator.com <http://www.powerinsulator.com>

### TOUGHENED GLASS INSULATORS

#### Disc Suspension Glass Insulator:

The glass insulators are used on high voltage and ultra-high voltage transmission and substation lines. It is a new generation products. Compared with porcelain insulators, it has the advantage of good value heat mechanical quality, anti-polution and arc-resistant properties characteristics, long lifespan, light weigh, and no need to check zero voltage, easy maintenance, short production cycle Etc.





# ZHENGZHOU ORIENT POWER CO., LTD

1626, No.9, Sanquan Road, Zhengzhou, Henan, 450000 P.R.China

Tel/Fax:+86 37186097078, sales direct: +86 13673997131

orient@powerinsulator.com http://www.powerinsulator.com

Insulators of ball and socket type:

Standard toughened glass insulator type:

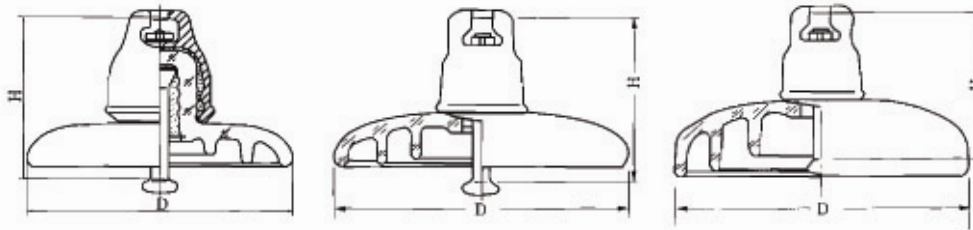


Fig.1

Fig.2

Fig.3

Type	Fig No.	Dia. D mm	Spacing H mm	Creepage Distance mm	Coupling size	Strength KN	Min. Lighting Impulse Withstand Volt. KV	Power frequency Withstand Volt. KV		
								Min. wet one minute	Min. dry one minute	Min. puncture Voltage
U40B	1	175	110	190	11A	40	70	33	55	80
U70BS	2	255	127	320	16	70	100	40	70	130
U70B	2	255	140	320	16	70	100	40	70	130
U70BL	2	255	146	320	16	70	100	40	70	130
U80BL	2	255	146	320	16	80	100	40	70	130
U100BL	2	255	146	320	16	100	100	40	70	130
U100BS	2	255	127	320	16	100	100	40	70	130
U120BS	2	255	146	320	16	120	100	40	70	130
U160BS	3	280	146	400	20	160	105	45	75	130
U160BL	3	280	170	400	20	160	105	45	75	130
U210BS	3	280	170	400	20	210	105	45	75	130
U240BS	3	280	170	400	24	240	105	45	75	130
U300B	3	320	195	485	24	300	130	50	85	130
U400B	3	360	205	550	28	420	140	55	90	140
U530B	3	380	240	600	32	530	140	55	90	140



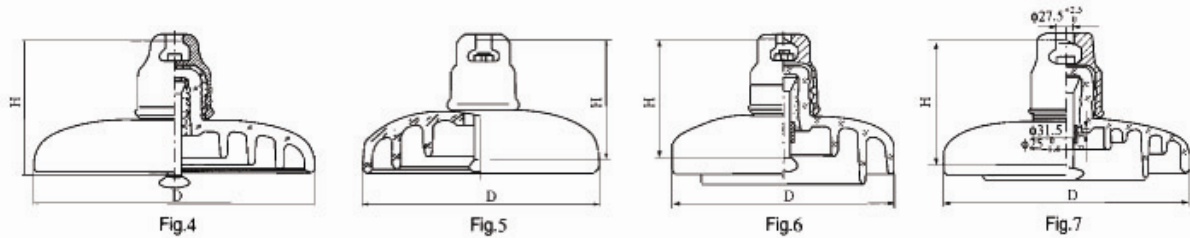
# ZHENGZHOU ORIENT POWER CO., LTD

1626, No.9, Sanquan Road, Zhengzhou, Henan, 450000 P.R.China

Tel/Fax:+86 37186097078, sales direct: +86 13673997131

orient@powerinsulator.com http://www.powerinsulator.com

## Large diameter toughened glass insulator type:



Type	Fig No.	Dia. D mm	Spacing H mm	Creepage Distance mm	Coupling size	Strength KN	Min. Lighting Impulse Withstand Volt. KV	Power frequency Withstand Volt. KV		
								Min. wet one minute	Min. dry one minute	Min. puncture Voltage
U70BSP	4	320	146	450	16	70	110	50	85	130
U100BSP	4	320	146	450	16	100	110	50	85	130
U120BSP	4	320	146	450	16	120	110	50	85	130
U160BSP	4	320	155	450	20	160	110	50	85	130
U160BSP1	4	320	170	450	20	160	110	50	85	130
U210BSP	4	320	170	485	20	210	120	55	90	130
U240BSP	4	320	170	485	24	240	120	55	90	130

## Fog type toughened glass insulator:

Type	Fig No.	Dia. D mm	Spacing H mm	Creepage Distance mm	Coupling size	Strength KN	Min. Lighting Impulse Withstand Volt. KV	Power frequency Withstand Volt. KV		
								Min. wet one minute	Min. dry one minute	Min. puncture Voltage
U70BP	5	255	146	400	16	70	120	45	95	130
U70BP1	5	280	146	450	16	70	125	50	95	130
U70PLP	6	320	146	550	16	70	140	55	100	130
U100BP	5	280	146	450	16	100	125	50	100	130
U120BP	5	255	146	400	16	120	125	50	95	130
U120BP1	5	280	146	450	20	120	125	50	95	130
U160BP	5	280	170	450	20	160	125	50	95	130
U160BLP	6	320	170	550	20	160	140	55	100	130
U210BLP	6	320	170	550	20	210	140	55	100	130
U240BLP	6	320	170	550	24	240	140	55	100	130
U300BP	7	380	195	635	24	300	155	60	100	130



# ZHENGZHOU ORIENT POWER CO., LTD

1626, No.9, Sanquan Road, Zhengzhou, Henan, 450000 P.R.China

Tel/Fax:+86 37186097078, sales direct: +86 13673997131

orient@powerinsulator.com <http://www.powerinsulator.com>

## Clevis and tongue type

### Standard toughened glass insulator:

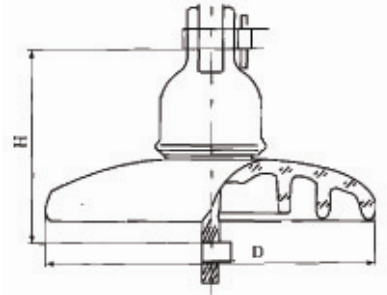


Fig 8

Type	Fig No.	Dia. D mm	Spacing H mm	Creepage Distance mm	Coupling size	Strength KN	Min. Lighting Impulse Withstand Volt. KV	Power frequency Withstand Volt. KV		
								Min. wet one minute	Min. dry one minute	Min. puncture Voltage
U40C	8	175	140	185	11C	40	100	33	55	80
U70C	8	255	146	320	16C	70	100	40	70	130
U80C	8	255	146	320	16C	80	100	40	70	130